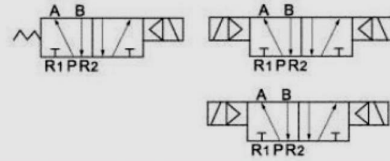


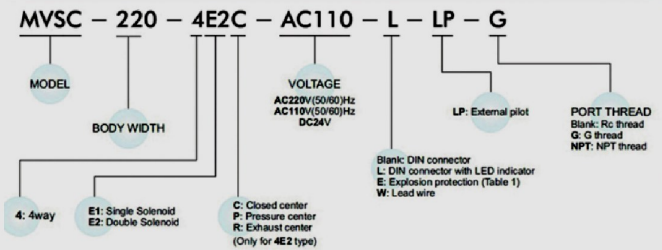
Solenoid valve MVSC series

Symbol:



MVSC-200-4E1

How to order

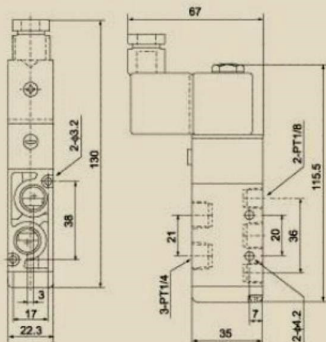


Specification

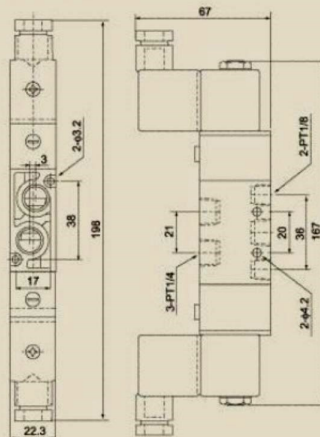
Model	MVSC-220-4E1	MVSC-220-4E2	MVSC-220-4E2C	MVSC-220-4E2P	MVSC-220-4E2R
Fluid	Air (filtered through 40 μ filter element)				
Action	Internally piloted acting type				
Valve type	2/5 way		3/5 way		
Effective area (mm ²)	14mm ² (CV=0.78)		12mm ² (CV=0.4)		
Port size	In=out=exhaust=1/4"				
Lubrication	Not required				
Operating pressure	1.5~8.0kgf/cm ²				
Proof pressure	10.5kg/cm ²				
Ambient & fluid temperature	5~60 $^{\circ}$ C				
Voltage range	+ 10%				
Power consumption	AC:4.5W DC:3.0W				
Insulation grade	F grade				
Protection	IP65 (DIN 40050)				
Connection	Lead wire type or terminal type				
Max. frequency	5 cycle/sec.				
Min. response time	0.05 sec.				
Weight (kg)					
Main parts material	Body	Aluminum alloy			
	Seal	NBR			

Dimension

MVSC-220-4E1



MVSC-220-4E2



MVSC-220-4E2C

