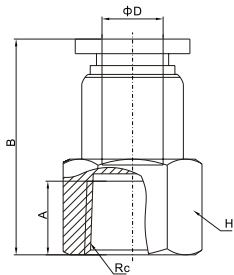


## Metric Size-R(PT,BSPT)Thread Fittings

## Metric Size-R(PT,BSPT)Thread Fittings

### PCF

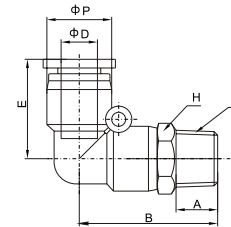
### Female Straight



Model	$\Phi D$	Rc	A	B	H
PCF04-M5	4	M5	7.0	22	12
PCF04-M6		M6	7.1	22	12
PCF04-01		RC1/8	8	23	12
PCF04-02		RC1/4	11	26	17
PCF06-M5	6	M5	7.0	23.5	12
PCF06-M6		M6	7.1	23.5	12
PCF06-01		RC1/8	8	24.5	12
PCF06-02		RC1/4	11	27.5	17
PCF06-03		RC3/8	12	28.5	21
PCF06-04		RC1/2	14	30.5	24
PCF08-01	8	RC1/8	8	26.5	14
PCF08-02		RC1/4	11	29.5	17
PCF08-03		RC3/8	12	30.5	21
PCF08-04		RC1/2	14	32.5	24
PCF10-01	10	RC1/8	8	30.5	17
PCF10-02		RC1/4	11	33.5	17
PCF10-03		RC3/8	12	34.5	21
PCF10-04		RC1/2	14	36.5	24
PCF12-02	12	RC1/4	11	34	21
PCF12-03		RC3/8	12	35	21
PCF12-04		RC1/2	14	37	24

### PL

### Male Elbow



Model	$\Phi D$	E	B	$\Phi P$	A	R	H
PL04-M5	4	18	22.2	11	4	M5	10
PL04-M6		18	22.2	11	4.1	M6	10
PL04-01		18	24.8	11	7	R1/8	10
PL04-02		18	28.8	11	9.5	R1/4	14
PL06-M5	6	19	22.5	13.4	4	M5	12
PL06-M6		19	22.5	13.4	4.1	M6	12
PL06-01		19	25.2	13.4	7	R1/8	12
PL06-02		19	28.2	13.4	9.5	R1/4	14
PL06-03		19	29.2	13.4	10	R3/8	17
PL06-04		19	33.7	13.4	13	R1/2	21
PL08-01	8	23	28.5	15	7	R1/8	14
PL08-02		23	32	15	9.5	R1/4	14
PL08-03		23	33	15	10	R3/8	17
PL08-04		23	36	15	13	R1/2	21
PL10-01	10	27.5	33.3	18.8	7	R1/8	17
PL10-02		27.5	36.3	18.8	9.5	R1/4	17
PL10-03		27.5	36.8	18.8	10	R3/8	17
PL10-04		27.5	40.5	18.8	13	R1/2	21
PL12-01	12	29.5	36.5	21	7	R1/8	19
PL12-02		29.5	38.5	21	9.5	R1/4	19
PL12-03		29.5	39	21	10	R3/8	19
PL12-04		29.5	44	21	13	R1/2	21
PL16-02	16	31.5	41	26	9.5	R1/4	24
PL16-03		31.5	42	26	10	R3/8	24
PL16-04		31.5	45	26	13	R1/2	24