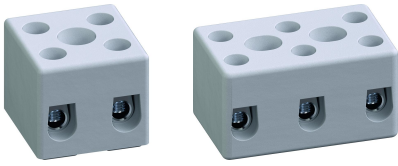


2-DIN-46284-ST / 3-DIN-46284-ST

Socket terminal blocks
with steel screws and mounting holes



GENERAL INFORMATION

No. of poles 2 + 3

TECHNICAL DATA

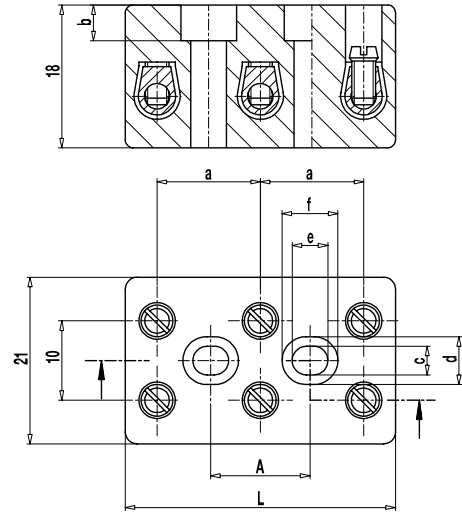
Clamping Range	<i>solid / stranded / AWG</i> 1 - 6 mm ² / 1 - 4 mm ² / 16 - 10 AWG [1]
Rated Cross Section	2,5 mm ²
Wire Stripping Length	6,5 mm ± 0,5 mm
Rated Insulation Voltage	450 V acc. to EN 60998-1
Rated Current	24 A
Torque	0,5 Nm
Base mounting	Recommendation: Screw M3 with matching washer; max. torque 0.8 Nm; use of an elastic & insulating substrate.
Other specifications	Terminal strips must not be strung together without considering the clearance and creepage distances.

APPROVALS

	Current [A]	Voltage [V]	Group	AWG	[Nm]
	20	300	B	18 - 12	0,51
	20	150	C	18 - 12	0,51
	10	300	D	18 - 12	0,51
	20	300	B	18 - 12	0,51
	20	150	C	18 - 12	0,51
	10	300	D, E	18 - 12	0,51

CONFIGURATIONS

Item	Article number	PU
2-DIN-46284-ST	10.610.012	264
3-DIN-46284-ST	10.610.013	168



Dimensions (mm)

Type	L	A	a	b	c	d	e	f
2-DIN-46284-ST	20	—	11,5	4	∅ 3,5	∅ 6,6	—	—
3-DIN-46284-ST	34	12,5	13	4	3,6	6	4,5	7

MATERIAL

Moulding	Technical ceramics
Comparative Tracking Index	CTI ≥ 600
Insulating Group	I
Temperature Range	-40°C up to 250°C
Terminal body	Nickel plated brass
Screw	M3; Zinc plated steel, blue passivated

OPTIONS / ACCESSORIES

- Version with wire protector on request

[1] Recommendation: Use flexible and AWG conductors with ferrules only.

X-ON Electronics

Largest Supplier of Electrical and Electronic Components

Click to view similar products for [Barrier Terminal Blocks](#) category:

Click to view products by [Weco](#) manufacturer:

Other Similar products are found below :

[CR151D20104](#) [670A-RZ-15-KT20](#) [6C1N03](#) [6PCR-02](#) [6PCR-02-008](#) [6PCR-05-008](#) [6PCR-08-008](#) [6PCR-09-008](#) [6PCR-13-006](#) [6PCR-15-006](#) [6PCV-06-008](#) [6PCV-06-716](#) [6PCV-09-001](#) [6PCV-15-008](#) [6PCV-17-1206](#) [6PCV-20-323](#) [6STR-06-006](#) [6STR-08-006](#) [6STR-12-008](#) [6STR-13-006](#) [6STR-14-008](#) [6STR-16-008](#) [6STR-17-008](#) [6STR-21-008](#) [6STR-25-008](#) [6STR-27-008](#) [6STV-03-008](#) [6STV-09-006](#) [6STV-10-006](#) [6WWV-11-008](#) [6WWV-12-008](#) [6WWV-16-008](#) [71502-50](#) [71507-47-50](#) [72504-C-50](#) [72506-C](#) [72507-C-50](#) [72508-56](#) [73203](#) [75505-C-50](#) [812-GP-3/4ST-09](#) [812-GPZ-03PSB](#) [8-1437402-5](#) [8-1437402-7](#) [8PCR-06-006](#) [8PCR-11-006](#) [8PCV-04-001](#) [8PCV-05-008](#) [8PCV-09-006](#) [8PCV-15-006](#)