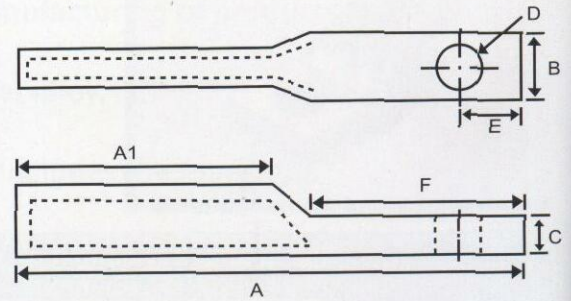
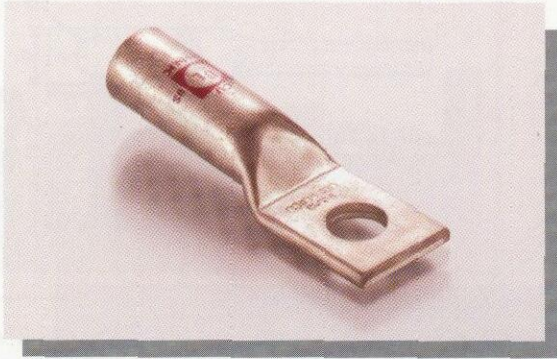


COPPER 1 HOLE LONG BARREL COMPRESSION LUGS



WIRE RANGE	STUD SIZE	COLOUR CODE	DIMENSION IN INCHES						
			A	A1	B	C	D	E	F
8	1/4	RED	1.52	0.81	0.42	0.08	0.25	0.28	0.59
6	1/4	BLUE	1.77	0.98	0.42	0.08	0.25	0.30	0.67
6	3/8	BLUE	1.91	0.98	0.59	0.08	0.41	0.37	0.81
6	9/16	BLUE							
6	10	BLUE	1.77	0.98	0.42	0.08	0.21	0.30	0.64
4	1/4	GRAY	1.77	0.98	0.49	0.09	0.25	0.31	0.67
4	3/8	GRAY	1.91	0.98	0.59	0.09	0.41	0.37	0.81
4	5/16	GRAY	1.77	0.98	0.49	0.09	0.33	0.31	0.67
4	10	GRAY	1.77	0.98	0.49	0.09	0.21	0.31	0.67
2	5/16	BROWN	2.07	1.10	0.60	0.10	0.33	0.37	0.81
2	3/8	BROWN	2.07	1.10	0.60	0.10	0.41	0.37	0.81
2	1/4	BROWN	2.07	1.10	0.60	0.10	0.25	0.37	0.81
1	5/16	GREEN	2.11	1.10	0.67	0.11	0.33	0.37	0.81
1	3/8	GREEN	2.21	1.10	0.67	0.11	0.41	0.37	0.81
1/0	5/16	PINK	2.21	1.20	0.74	0.13	0.33	0.37	1.81
1/0	3/8	PINK					0.41		
1/0	1/2	PINK	2.50	1.20	0.74	0.13	0.51	0.47	1.06
2/0	3/8	BLACK	2.68	1.38	0.81	0.12	0.41	0.47	1.06
2/0	1/2	BLACK	2.68	1.38	0.81	0.12	0.51	0.47	1.06
3/0	1/2	ORANGE	2.80	1.38	0.90	0.13	0.51	0.47	1.06
3/0	3/8	ORANGE	2.80	1.38	0.90	0.13	0.41	0.47	1.06
4/0	1/2	PURPLE	2.80	1.42	1.00	0.13	0.51	0.52	1.06
4/0	3/8	PURPLE	2.80	1.42	1.00	0.13	0.41	0.52	1.06
250	1/2	YELLOW	3.03	1.61	1.09	0.15	0.51	0.52	1.06
250	3/8	YELLOW	3.03	1.61	1.09	0.15	0.41	0.52	1.06
300	1/2	WHITE	3.39	1.97	1.19	0.15	0.51	0.52	1.06
350	1/2	RED	3.46	1.97	1.28	0.17	0.51	0.52	1.06
350	5/8	RED	3.46	1.97	1.28	0.17	0.67	0.51	1.06
400	1/2	BLUE	3.86	1.97	1.39	0.18	0.51	0.51	1.38
	5/8						0.67		
500	1/2	BROWN	4.13	2.24	1.54	0.22	0.51	0.51	1.38
	5/8						0.67		
600	5/8	GREEN	4.25	2.24	1.72	0.25	0.67	0.69	1.46
750	5/8	BLACK	5.16	2.64	1.90	0.27	0.67	0.69	1.85

- * MADE OF HIGH CONDUCTIVITY COPPER TUBING
- * TINNED FOR CORROSION RESISTANCE
- * COLOUR CODED
- * UL 486A LISTED
- * LISTED FOR 35 KVA WHEN PROPERLY INSTALLED

