

GEP-F411-20A AIO

FC:F411

ESC:BLS_20A

GEPRC

Specification:

Model Name:	GEP-F411-20A AIO
MCU:	STM32F411
Gyro:	MPU6000
Firmware target:	GEPRCF411
OSD:	Betaflight OSD w/AT7456Ev
Current:	YES
Beeper:	YES
LED:	YES
Black Box:	NO
USB:	micro USB
BEC output:	5V@1A
ESC MCU:	8BB21F16G
Continuous current:	20A
MAX current:	30A (10s)
Input Voltage:	2-4S LiPo
Supports:	Dshot600,Oneshot,Multishot
ESC Traget:	G_H_30
Size:	32x32mm
Installing Hole:	26.5x26.5mm(M2)
Weight:	8.3g

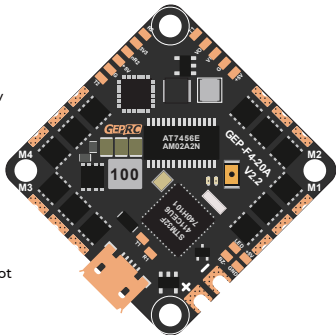
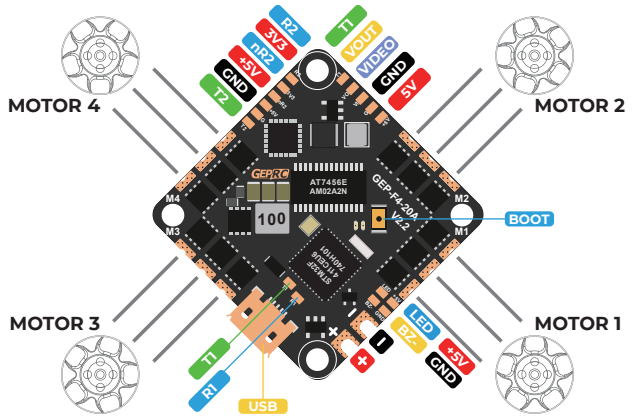


Diagram:



DJI Diagram FPV System:

Identifier	Configuration/MSP	Serial RX
USB VCP	<input checked="" type="checkbox"/> 115200 ▾	<input type="checkbox"/>
UART1	<input checked="" type="checkbox"/> 115200 ▾	<input type="checkbox"/>
UART2	<input type="checkbox"/> 115200 ▾	<input checked="" type="checkbox"/>

Receiver

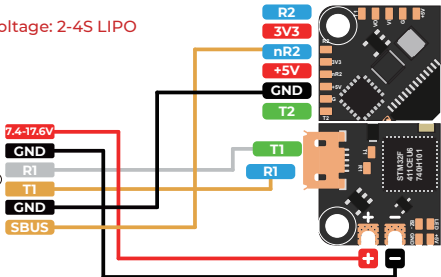
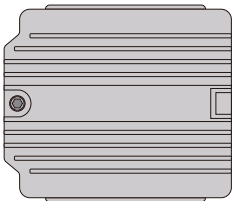
Serial-based receiver(SPEKSAT,S ▾) Receiver Mode

Note:Remember to configure a Serial Port (via Ports tab) and choose a Ser Receiver Provider when using RX_SERIAL feature.

SBUS ▾ Serial Receiver Provider

DJI AIR Unit Module Input Voltage: 2-4S LIPO

DJI AIR Unit Module

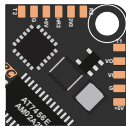


Analog VTX:

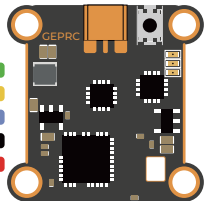
Identifier	Configuration/MSP	Peripherals	
USB VCP	<input checked="" type="checkbox"/> 115200 ▾	Disabled ▾	AUTO ▾
UART1	<input type="checkbox"/> 115200 ▾	VTX,IRC Tamp ▾	AUTO ▾
UART2	<input type="checkbox"/> 115200 ▾	Disabled ▾	AUTO ▾

Other Features

- AIRMODE
- OSD
- DYNAMIC_FILTER



STABLE VTX58600N

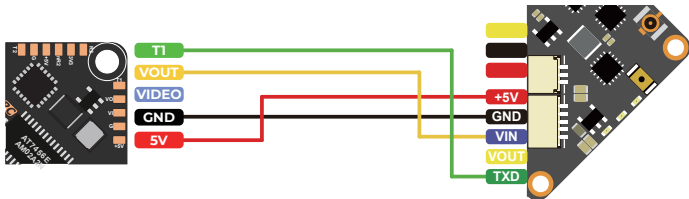


Analog VTX:

Identifier	Configuration/MSP	Peripherals	
USB VCP	<input checked="" type="checkbox"/> 115200 ▾	Disabled ▾	AUTO ▾
UART1	<input type="checkbox"/> 115200 ▾	VTX,IRC Tamp ▾	AUTO ▾
UART2	<input type="checkbox"/> 115200 ▾	Disabled ▾	AUTO ▾

Other Features

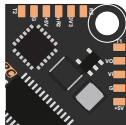
- AIRMODE
- OSD
- DYNAMIC_FILTER



Camera:

Other Features

<input type="checkbox"/>	AIRMODE	Permanently enable Airmode
<input checked="" type="checkbox"/>	OSD	On Screen Display
<input type="checkbox"/>	DYNAMIC_FILTER	Dynamic gyro notch filtering



T1

VOUT

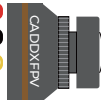
VIDEO

GND

5V



CADDX RateI2



Receiver:

Identifier	Configuration/MSP	Serial RX
USB VCP	<input checked="" type="checkbox"/> 115200 ▾	<input type="checkbox"/>
UART1	<input type="checkbox"/> 115200 ▾	<input type="checkbox"/>
UART2	<input type="checkbox"/> 115200 ▾	<input checked="" type="checkbox"/>

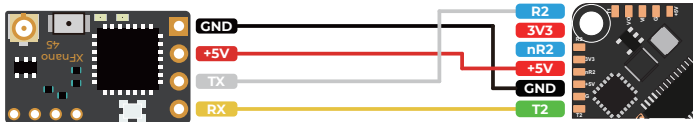
Receiver

Serial-based receiver(SPEKSAT,S ▾) Receiver Mode

Note:Remember to configure a Serial Port (via Ports tab) and choose a Ser Receiver Provider when using RX_SERIAL feature.

CRSF ▾ Serial Receiver Provider

TBS NanoRX



Receiver:

Identifier	Configuration/MSP	Serial RX
USB VCP	<input checked="" type="checkbox"/> 115200 ▾	<input type="checkbox"/>
UART1	<input type="checkbox"/> 115200 ▾	<input type="checkbox"/>
UART2	<input type="checkbox"/> 115200 ▾	<input checked="" type="checkbox"/>

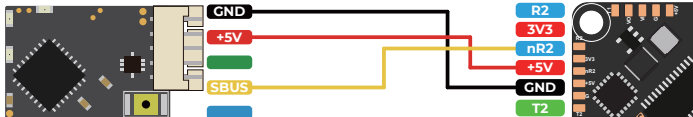
Receiver

Serial-based receiver(SPEKSAT,S ▾) Receiver Mode

Note:Remember to configure a Serial Port (via Ports tab) and choose a Ser Receiver Provider when using RX_SERIAL feature.

SBUS ▾ Serial Receiver Provider

FrSky R-XSR



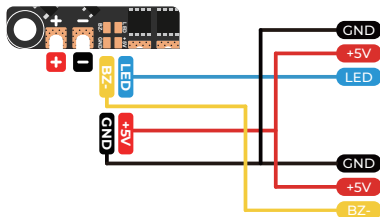
Buzzer & Led Board:

Other Features

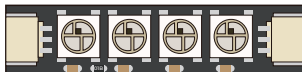
- TELEMETRY
- LED_STRIP
- DISPLAY

Beeper Configuration

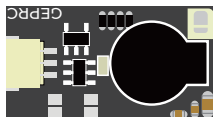
- GYRO_CACIBRATED
- RX_LOST
- RX_LOST_LOADING
-



GEPRC LED Board



GEPRC Super Buzzer



Include:

1 x GEP-F411-20A AIO

1 x XT30-7CM-18AWG Power cables

1 x 35V220UF capacitor

8 x M2*6.5mm Damping rings

Contact:

Website: <http://geprc.com>

facebook



[facebook.com/geprc](https://www.facebook.com/geprc)

Official
website



www.geprc.com

Manual



geprc.com/support

Instagram



[instagram.com/geprc](https://www.instagram.com/geprc)

You Tube

