

Speed Controllers

Specification

Fluid	Air, Vacuum	
Pressure Range	0~1.0MPa	150PSI
Max Pressure	1.5MPa	250PSI
Temperature Range	0~60°C	32~140°F
Applicable Tube	PU (Polyurethane)	PA(Nylon)

① Type

② Tube Outer Diameter

	Metric Tube					
Code	04	06	08	10	12	16
Tube Outer Diameter mm	Φ4	Φ6	Φ8	Φ10	Φ12	Φ16

③ Thread Type and Size

55° Taper Pipe Thread					
Code	01	02	03	04	06
Thread	R1/8	R1/4	R3/8	R1/2	R3/4

55° G-Thread				
Code	G01	G02	G03	G04
Thread	G1/8	G1/4	G3/8	G1/2

Metric Size				
Code	M5	M6	M8	M10
Thread	M5x0.8	M6x1	M8x1	M10x1

Speed Controllers

Characteristics

- 1.Speed Controllers precisely permit the optimal rate of airflow for the smooth cylinder movement of a driving device.
- 2.Unidirectional airflow is available for either exhaust or inlet flow control methods.

Product Code System

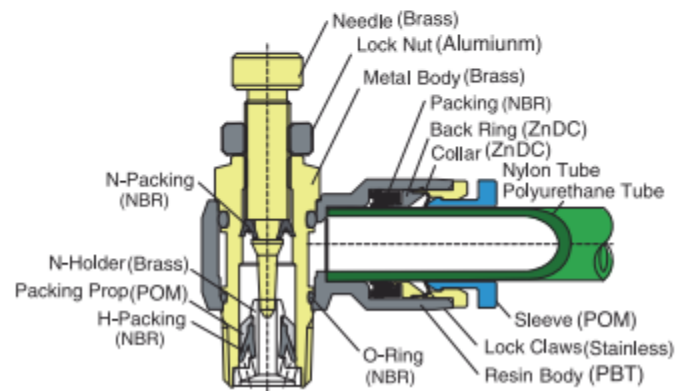
JSC 08 - 01

①

②

③

Structure Chart



Inch Tube

5/32	3/16	1/4	5/16	3/8	1/2
Φ5/32	Φ3/16	Φ1/4	Φ5/16	Φ3/8	Φ1/2

UNF

American Standard Taper Pipe Thread(NPT)

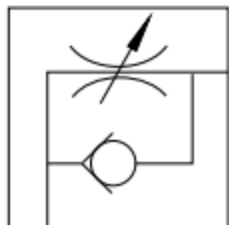
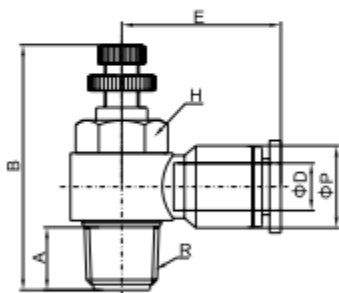
Code	U10	N01	N02	N02	N04	N06
Thread	10-32UNF	NPT1/8	NPT1/4	NPT3/8	NPT1/2	NPT3/4

Metric Size

M12	M12A	M14	M16	M20
M12x1.25	M12Ax1.5	M14x1.5	M16x1.5	M20x1.5

Speed Controllers

JSC

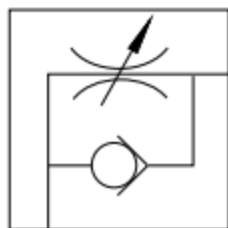
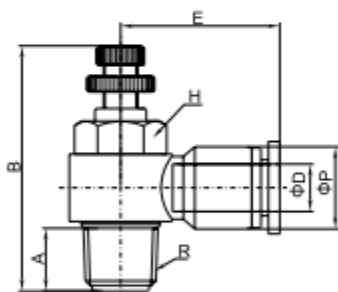


Control-in

Model	ΦD	E	B	ΦP	A	G	H
JSC04-M5B	4	20	28	11	3.8	M5	8
JSC04-01B		22.3	37	11	7.5	R1/8	12
JSC04-02B		24.1	44.5	11	11	R1/4	14
JSC06-M5B	6	21.9	28	13.4	3.5	M5	8
JSC06-01B		23.1	37	13.4	7.5	R1/8	12
JSC06-02B		25	44.5	13.4	11	R1/4	14
JSC06-03B		26.9	48	13.4	12	R3/8	19
JSC06-04B		29.8	52.5	13	13	R1/2	24
JSC08-01B	8	25.6	37	15	7.5	R1/8	12
JSC08-02B		28.5	44.5	15	11	R1/4	14
JSC08-03B		29.6	48	15	12	R3/8	19
JSC08-04B		32.5	52.5	15	13	R1/2	24
JSC10-01B	10	30.1	37	18.8	7.5	R1/8	12
JSC10-02B		32.3	44.5	18.8	11	R1/4	14
JSC10-03B		32.9	48	18.8	12	R3/8	19
JSC10-04B		35.8	52.5	18.8	13	R1/2	24
JSC12-02B	12	33.5	44.5	21	11	R1/4	14
JSC12-03B		35.6	48	21	12	R3/8	19
JSC12-04B		36.5	52.5	21	13	R1/2	24

Speed Controllers

JSC

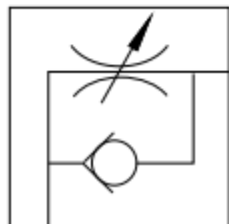
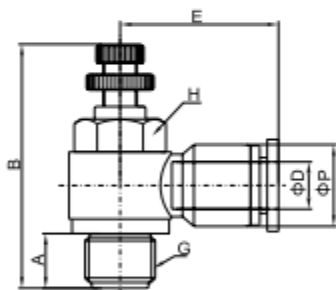


Control-out

Model	ΦD	E	B	ΦP	A	G	H
JSC04-M5	4	20	28	11	3.8	M5	8
JSC04-01		22.3	37	11	7.5	R1/8	12
JSC04-02		24.1	44.5	11	11	R1/4	14
JSC06-M5	6	21.9	28	13.4	3.5	M5	8
JSC06-01		23.1	37	13.4	7.5	R1/8	12
JSC06-02		25	44.5	13.4	11	R1/4	14
JSC06-03		26.9	48	13.4	12	R3/8	19
JSC06-04		29.8	52.5	13	13	R1/2	24
JSC08-01	8	25.6	37	15	7.5	R1/8	12
JSC08-02		28.5	44.5	15	11	R1/4	14
JSC08-03		29.6	48	15	12	R3/8	19
JSC08-04		32.5	52.5	15	13	R1/2	24
JSC10-01	10	30.1	37	18.8	7.5	R1/8	12
JSC10-02		32.3	44.5	18.8	11	R1/4	14
JSC10-03		32.9	48	18.8	12	R3/8	19
JSC10-04		35.8	52.5	18.8	13	R1/2	24
JSC12-02	12	33.5	44.5	21	11	R1/4	14
JSC12-03		35.6	48	21	12	R3/8	19
JSC12-04		36.5	52.5	21	13	R1/2	24

Speed Controllers

JSC-G

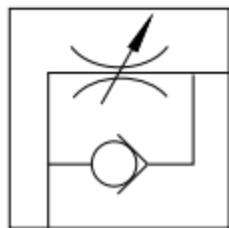
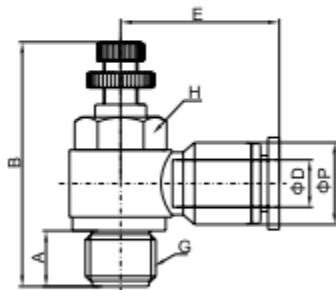


Control-in

Model	ΦD	E	B	ΦP	A	G	H
JSC04-G01B	4	22.3	37	11	7.5	G1/8	12
JSC04-G02B		24.1	44.5	11	11	G1/4	14
JSC06-G01B	6	23.1	37	13.4	7.5	G1/8	12
JSC06-G02B		25	44.5	13.4	11	G1/4	14
JSC06-G03B		26.9	48	13.4	12	G3/8	19
JSC06-G04B		29.8	52.5	13	13	G1/2	24
JSC08-G01B	8	25.6	37	15	7.5	G1/8	12
JSC08-G02B		28.5	44.5	15	11	G1/4	14
JSC08-G03B		29.6	48	15	12	G3/8	19
JSC08-G04B		32.5	52.5	15	13	G1/2	24
JSC10-G01B	10	30.1	37	18.8	7.5	G1/8	12
JSC10-G02B		32.3	44.5	18.8	11	G1/4	14
JSC10-G03B		32.9	48	18.8	12	G3/8	19
JSC10-G04B		35.8	52.5	18.8	13	G1/2	24
JSC12-G02B	12	33.5	44.5	21	11	G1/4	14
JSC12-G03B		35.6	48	21	12	G3/8	19
JSC12-G04B		36.5	52.5	21	13	G1/2	24

Speed Controllers

JSC-G



Control-out

Model	ΦD	E	B	ΦP	A	G	H
JSC04-G01	4	22.3	37	11	7.5	G1/8	12
JSC04-G02		24.1	44.5	11	11	G1/4	14
JSC06-G01	6	23.1	37	13.4	7.5	G1/8	12
JSC06-G02		25	44.5	13.4	11	G1/4	14
JSC06-G03		26.9	48	13.4	12	G3/8	19
JSC06-G04		29.8	52.5	13	13	G1/2	24
JSC08-G01	8	25.6	37	15	7.5	G1/8	12
JSC08-G02		28.5	44.5	15	11	G1/4	14
JSC08-G03		29.6	48	15	12	G3/8	19
JSC08-G04		32.5	52.5	15	13	G1/2	24
JSC10-G01	10	30.1	37	18.8	7.5	G1/8	12
JSC10-G02		32.3	44.5	18.8	11	G1/4	14
JSC10-G03		32.9	48	18.8	12	G3/8	19
JSC10-G04		35.8	52.5	18.8	13	G1/2	24
JSC12-G02	12	33.5	44.5	21	11	G1/4	14
JSC12-G03		35.6	48	21	12	G3/8	19
JSC12-G04		36.5	52.5	21	13	G1/2	24