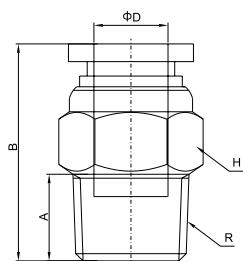


Metric Size-R(PT,BSPT)Thread Fittings

Metric Size-R(PT,BSPT)Thread Fittings

PC

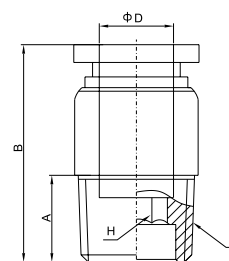
Male Straight



| Model | ΦD | R | A | B | H |
|----------|------|------|-----|------|----|
| PC 04-M5 | 4 | M5 | 4 | 19 | 10 |
| PC 04-M6 | | M6 | 4.1 | 19 | 10 |
| PC 04-01 | | R1/8 | 7 | 19 | 10 |
| PC 04-02 | | R1/4 | 9.5 | 19 | 14 |
| PC 06-M5 | 6 | M5 | 4 | 20.5 | 12 |
| PC 06-M6 | | M6 | 4.1 | 20.5 | 12 |
| PC 06-01 | | R1/8 | 7 | 20 | 12 |
| PC 06-02 | | R1/4 | 9.5 | 21 | 14 |
| PC 06-03 | R3/8 | 10 | 21 | 17 | |
| PC 06-04 | R1/2 | 13 | 24 | 21 | |
| PC 08-01 | 8 | R1/8 | 7 | 24.5 | 14 |
| PC 08-02 | | R1/4 | 9.5 | 24.5 | 14 |
| PC 08-03 | | R3/8 | 10 | 22 | 17 |
| PC 08-04 | | R1/2 | 13 | 25 | 21 |
| PC 10-01 | 10 | R1/8 | 7 | 29 | 17 |
| PC 10-02 | | R1/4 | 9.5 | 31 | 17 |
| PC 10-03 | | R3/8 | 10 | 28.5 | 17 |
| PC 10-04 | | R1/2 | 13 | 26 | 21 |
| PC 12-01 | 12 | R1/8 | 7 | 30.5 | 20 |
| PC 12-02 | | R1/4 | 9.5 | 32.5 | 20 |
| PC 12-03 | | R3/8 | 10 | 29 | 20 |
| PC 12-04 | | R1/2 | 13 | 27.5 | 21 |
| PC 16-02 | 16 | R1/4 | 9.5 | 33.5 | 24 |
| PC 16-03 | | R3/8 | 10 | 34 | 24 |
| PC 16-04 | | R1/2 | 13 | 35 | 24 |

POC

Hex. Holed Straight



| Model | ΦD | R | A | B | H |
|----------|------|------|-----|------|----|
| POC04-M5 | 4 | M5 | 4 | 19 | 2 |
| POC04-M6 | | M6 | 4.1 | 19 | 2 |
| POC04-01 | | R1/8 | 7 | 19 | 3 |
| POC04-02 | | R1/4 | 9.5 | 19 | 3 |
| POC06-M5 | 6 | M5 | 4 | 20.5 | 2 |
| POC06-M6 | | M6 | 4.1 | 20.5 | 2 |
| POC06-01 | | R1/8 | 7 | 20 | 4 |
| POC06-02 | | R1/4 | 9.5 | 21 | 4 |
| POC06-03 | R3/8 | 10 | 21 | 4 | |
| POC06-04 | R1/2 | 13 | 24 | 4 | |
| POC08-01 | 8 | R1/8 | 7 | 24.5 | 5 |
| POC08-02 | | R1/4 | 9.5 | 24.5 | 5 |
| POC08-03 | | R3/8 | 10 | 22 | 6 |
| POC08-04 | | R1/2 | 13 | 25 | 6 |
| POC10-01 | 10 | R1/8 | 7 | 29 | 5 |
| POC10-02 | | R1/4 | 9.5 | 31 | 6 |
| POC10-03 | | R3/8 | 10 | 28.5 | 8 |
| POC10-04 | | R1/2 | 13 | 26 | 8 |
| POC12-01 | 12 | R1/8 | 7 | 30.5 | 5 |
| POC12-02 | | R1/4 | 9.5 | 32.5 | 6 |
| POC12-03 | | R3/8 | 10 | 29 | 8 |
| POC12-04 | | R1/2 | 13 | 27.5 | 8 |
| POC16-02 | 16 | R1/4 | 9.5 | 33.5 | 6 |
| POC16-03 | | R3/8 | 10 | 34 | 8 |
| POC16-04 | | R1/2 | 13 | 35 | 10 |