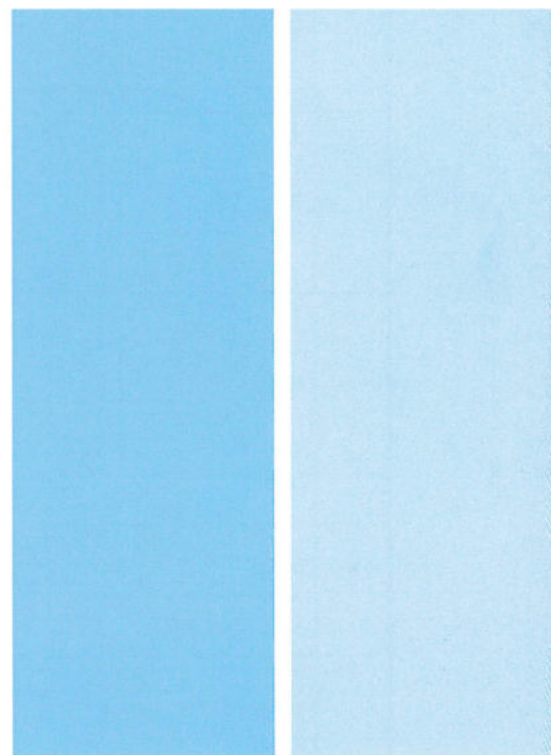


2015

WIRING DEVICES

NEMA Connectors, Plugs and Receptacles



Rong Kuang Electric Co., Ltd.
ISO 9001 Certified

Product List

| Straight Blade Type | | | | | | | | | | |
|---------------------|----------------|----------------|------|------|---------|---------|----------|---------------|------|---|
| NEMA Config. | Product No. | Category | Pole | Wire | Current | Voltage | Material | Certification | Page | |
| 5-15 | J-710 | Plug | 2 | 3 | 15 | 125 | Nylon | UL, cUL | 1 | |
| | J-712 | Connector | 2 | 3 | 15 | 125 | Nylon | UL, cUL | | |
| | J-501 | Flanged Inlet | 2 | 3 | 15 | 125 | Nylon | UL, cUL | | |
| | J-502 | Flanged Outlet | 2 | 3 | 15 | 125 | Nylon | UL, cUL | | |
| 6-15 | J-720 | Plug | 2 | 3 | 15 | 250 | Nylon | UL, cUL | | |
| | J-722 | Connector | 2 | 3 | 15 | 250 | Nylon | UL, cUL | | |
| | J-505 | Flanged Inlet | 2 | 3 | 15 | 250 | Nylon | UL, cUL | | |
| 5-20 | J-506 | Flanged Outlet | 2 | 3 | 15 | 250 | Nylon | UL, cUL | | |
| | J-716 | Plug | 2 | 3 | 20 | 125 | Nylon | UL, cUL | | 2 |
| | J-718 | Connector | 2 | 3 | 20 | 125 | Nylon | UL, cUL | | |
| J-503 | Flanged Inlet | 2 | 3 | 20 | 125 | Nylon | UL, cUL | | | |
| J-504 | Flanged Outlet | 2 | 3 | 20 | 125 | Nylon | UL, cUL | | | |
| 6-20 | J-726 | Plug | 2 | 3 | 20 | 250 | Nylon | UL, cUL | | |
| | J-728 | Connector | 2 | 3 | 20 | 250 | Nylon | UL, cUL | | |
| | J-507 | Flanged Inlet | 2 | 3 | 20 | 250 | Nylon | UL, cUL | | |
| J-508 | Flanged Outlet | 2 | 3 | 20 | 250 | Nylon | UL, cUL | | | |
| Locking Devices | | | | | | | | | | |
| NEMA Config. | Product No. | Category | Pole | Wire | Current | Voltage | Material | Certification | Page | |
| L5-15 | J-701 | Plug | 2 | 3 | 15 | 125 | Nylon | UL, cUL | 3 | |
| | J-703 | Connector | 2 | 3 | 15 | 125 | Nylon | UL, cUL | | |
| | J-509 | Flanged Inlet | 2 | 3 | 15 | 125 | Nylon | UL, cUL | | |
| | J-510 | Flanged Outlet | 2 | 3 | 15 | 125 | Nylon | UL, cUL | | |
| | J-702 | Receptacle | 2 | 3 | 15 | 125 | Nylon | UL, cUL | | |
| L5-20 | WJ-8320 | Plug | 2 | 3 | 20 | 125 | PC+Nylon | UL, cUL | | |
| | WJ-9320B | Connector | 2 | 3 | 20 | 125 | PC+Nylon | UL, cUL | | |
| | J-513 | Flanged Inlet | 2 | 3 | 20 | 125 | PC+Nylon | UL, cUL | | |
| | J-514 | Flanged Outlet | 2 | 3 | 20 | 125 | PC+Nylon | UL, cUL | | |
| | WJ-6323B | Receptacle | 2 | 3 | 20 | 125 | P.B.T | UL, cUL | | |
| L5-30 | WJ-8330 | Plug | 2 | 3 | 30 | 125 | PC+Nylon | UL, cUL | | |
| | WJ-9330B | Connector | 2 | 3 | 30 | 125 | PC+Nylon | UL, cUL | | |
| | J-517 | Flanged Inlet | 2 | 3 | 30 | 125 | PC+Nylon | UL, cUL | | |
| | J-518 | Flanged Outlet | 2 | 3 | 30 | 125 | PC+Nylon | UL, cUL | | |
| L6-15 | WJ-6330B | Receptacle | 2 | 3 | 30 | 125 | P.B.T | UL, cUL | | |
| | J-705 | Plug | 2 | 3 | 15 | 250 | Nylon | UL, cUL | 4 | |
| | J-707 | Connector | 2 | 3 | 15 | 250 | Nylon | UL, cUL | | |
| | J-511 | Flanged Inlet | 2 | 3 | 15 | 250 | Nylon | UL, cUL | | |
| | J-512 | Flanged Outlet | 2 | 3 | 15 | 250 | Nylon | UL, cUL | | |
| J-706 | Receptacle | 2 | 3 | 15 | 250 | Nylon | UL, cUL | | | |
| L6-20 | WJ-8321 | Plug | 2 | 3 | 20 | 250 | PC+Nylon | UL, cUL | | |
| | WJ-9321B | Connector | 2 | 3 | 20 | 250 | PC+Nylon | UL, cUL | | |
| | J-515 | Flanged Inlet | 2 | 3 | 20 | 250 | PC+Nylon | UL, cUL | | |
| | J-516 | Flanged Outlet | 2 | 3 | 20 | 250 | PC+Nylon | UL, cUL | | |
| L6-30 | WJ-6322B | Receptacle | 2 | 3 | 20 | 250 | P.B.T | UL, cUL | | |
| | WJ-8331 | Plug | 2 | 3 | 30 | 250 | PC+Nylon | UL, cUL, PSE | | |
| | WJ-9331B | Connector | 2 | 3 | 30 | 250 | PC+Nylon | UL, cUL | | |
| | J-519 | Flanged Inlet | 2 | 3 | 30 | 250 | PC+Nylon | UL, cUL | | |
| | J-520 | Flanged Outlet | 2 | 3 | 30 | 250 | PC+Nylon | UL, cUL | | |
| WJ-6331B | Receptacle | 2 | 3 | 30 | 250 | P.B.T | UL, cUL | | | |

Product List

| Locking Devices | | | | | | | | | |
|-----------------|----------------|----------------|------|------|---------|---------|----------|---------------|------|
| NEMA Config. | Product No. | Category | Pole | Wire | Current | Voltage | Material | Certification | Page |
| L14-20 | WJ-8420 | Plug | 3 | 4 | 20 | 125/250 | PC+Nylon | UL, cUL | 5 |
| | WJ-9420B | Connector | 3 | 4 | 20 | 125/250 | PC+Nylon | UL, cUL | |
| | J-521 | Flanged Inlet | 3 | 4 | 20 | 125/250 | PC+Nylon | UL, cUL | |
| | J-522 | Flanged Outlet | 3 | 4 | 20 | 125/250 | PC+Nylon | UL, cUL | |
| | WJ-6420B | Receptacle | 3 | 4 | 20 | 125/250 | P.B.T | UL, cUL | |
| L14-30 | WJ-8430 | Plug | 3 | 4 | 30 | 125/250 | PC+Nylon | UL, cUL | |
| | WJ-9430B | Connector | 3 | 4 | 30 | 125/250 | PC+Nylon | UL, cUL | |
| | J-525 | Flanged Inlet | 3 | 4 | 30 | 125/250 | PC+Nylon | UL, cUL | |
| | J-526 | Flanged Outlet | 3 | 4 | 30 | 125/250 | PC+Nylon | UL, cUL | |
| L15-20 | WJ-6430B | Receptacle | 3 | 4 | 30 | 125/250 | P.B.T | UL, cUL | |
| | WJ-8421 | Plug | 3 | 4 | 20 | 250 | PC+Nylon | UL, cUL | |
| | WJ-9421B | Connector | 3 | 4 | 20 | 250 | PC+Nylon | UL, cUL | |
| L15-30 | J-523 | Flanged Inlet | 3 | 4 | 20 | 250 | PC+Nylon | UL, cUL | |
| | J-524 | Flanged Outlet | 3 | 4 | 20 | 250 | PC+Nylon | UL, cUL | |
| | WJ-6421B | Receptacle | 3 | 4 | 20 | 250 | P.B.T | UL, cUL | |
| | WJ-8431 | Plug | 3 | 4 | 30 | 250 | PC+Nylon | UL, cUL | |
| | WJ-9431B | Connector | 3 | 4 | 30 | 250 | PC+Nylon | UL, cUL | |
| L16-20 | J-527 | Flanged Inlet | 3 | 4 | 30 | 250 | PC+Nylon | UL, cUL | |
| | J-528 | Flanged Outlet | 3 | 4 | 30 | 250 | PC+Nylon | UL, cUL | |
| | WJ-6436B | Receptacle | 3 | 4 | 30 | 250 | P.B.T | UL, cUL | |
| | WJ-8422 | Plug | 3 | 4 | 20 | 480 | Nylon | UL, cUL | |
| | WJ-9422 | Connector | 3 | 4 | 20 | 480 | Nylon | UL, cUL | |
| L16-30 | J-529 | Flanged Inlet | 3 | 4 | 20 | 480 | Nylon | UL, cUL | |
| | J-530 | Flanged Outlet | 3 | 4 | 20 | 480 | Nylon | UL, cUL | |
| | WJ-8432 | Plug | 3 | 4 | 30 | 480 | Nylon | UL, cUL | |
| | WJ-9432 | Connector | 3 | 4 | 30 | 480 | Nylon | UL, cUL | |
| L17-30 | J-531 | Flanged Inlet | 3 | 4 | 30 | 480 | Nylon | UL, cUL | |
| | J-532 | Flanged Outlet | 3 | 4 | 30 | 480 | Nylon | UL, cUL | |
| | WJ-8433 | Plug | 3 | 4 | 30 | 600 | Nylon | UL, cUL | |
| | WJ-9433 | Connector | 3 | 4 | 30 | 600 | Nylon | UL, cUL | |
| L21-20 | J-533 | Flanged Inlet | 3 | 4 | 30 | 600 | Nylon | UL, cUL | |
| | J-534 | Flanged Outlet | 3 | 4 | 30 | 600 | Nylon | UL, cUL | |
| | WJ-8521 | Plug | 4 | 5 | 20 | 120/208 | Nylon | UL, cUL | |
| L21-30 | WJ-9521 | Connector | 4 | 5 | 20 | 120/208 | Nylon | UL, cUL | |
| | J-535 | Flanged Inlet | 4 | 5 | 20 | 120/208 | Nylon | UL, cUL | |
| | J-536 | Flanged Outlet | 4 | 5 | 20 | 120/208 | Nylon | UL, cUL | |
| L22-20 | WJ-8531 | Plug | 4 | 5 | 30 | 120/208 | Nylon | UL, cUL | |
| | WJ-9531 | Connector | 4 | 5 | 30 | 120/208 | Nylon | UL, cUL | |
| | J-537 | Flanged Inlet | 4 | 5 | 30 | 120/208 | Nylon | UL, cUL | |
| L22-30 | J-538 | Flanged Outlet | 4 | 5 | 30 | 120/208 | Nylon | UL, cUL | |
| | WJ-8522 | Plug | 4 | 5 | 20 | 277/480 | Nylon | | |
| | WJ-9522 | Connector | 4 | 5 | 20 | 277/480 | Nylon | | |
| | J-539 | Flanged Inlet | 4 | 5 | 20 | 277/480 | Nylon | | |
| L22-30 | J-540 | Flanged Outlet | 4 | 5 | 20 | 277/480 | Nylon | | |
| | WJ-8532 | Plug | 4 | 5 | 30 | 277/480 | Nylon | | |
| | WJ-9532 | Connector | 4 | 5 | 30 | 277/480 | Nylon | | |
| | J-541 | Flanged Inlet | 4 | 5 | 30 | 277/480 | Nylon | | |
| J-542 | Flanged Outlet | 4 | 5 | 30 | 277/480 | Nylon | | | |

Product List

| Locking Devices | | | | | | | | | |
|-----------------|-------------|----------------|------|------|---------|---------|--------------------|---------------|------|
| NEMA Config. | Product No. | Category | Pole | Wire | Current | Voltage | Material | Certification | Page |
| L23-20 | WJ-8523 | Plug | 4 | 5 | 20 | 347/600 | Nylon | | 9 |
| | WJ-9523 | Connector | 4 | 5 | 20 | 347/600 | Nylon | | |
| | J-543 | Flanged Inlet | 4 | 5 | 20 | 347/600 | Nylon | | |
| | J-544 | Flanged Outlet | 4 | 5 | 20 | 347/600 | Nylon | | |
| L23-30 | WJ-8533 | Plug | 4 | 5 | 30 | 347/600 | Nylon | | |
| | WJ-9533 | Connector | 4 | 5 | 30 | 347/600 | Nylon | | |
| | J-545 | Flanged Inlet | 4 | 5 | 30 | 347/600 | Nylon | | |
| | J-546 | Flanged Outlet | 4 | 5 | 30 | 347/600 | Nylon | | |
| Japan Limited | | | | | | | | | |
| L5-20 | WJ-6321B | Receptacle | 2 | 3 | 20 | 125 | Phenolic | UL, CSA | 10 |
| L6-20 | WJ-6320B | Receptacle | 2 | 3 | 20 | 250 | Phenolic | UL, CSA | |
| L5-30 | WJ-6330B | Receptacle | 2 | 3 | 30 | 125 | Phenolic | UL, CSA | |
| L6-30 | WJ-6331B | Receptacle | 2 | 3 | 30 | 250 | Phenolic +P.B.T | UL, PSE | |
| L5-30 | WJ-6332B | Receptacle | 2 | 3 | 30 | 125 | Phenolic | UL, CSA | |
| L14-30 | WJ-6432B | Receptacle | 3 | 4 | 30 | 125/250 | Phenolic | UL, CSA | |
| L14-20 | WJ-6422B | Receptacle | 3 | 4 | 20 | 125/250 | Phenolic | UL, CSA | |
| L14-30 | WJ-6433B | Receptacle | 3 | 4 | 30 | 125/250 | Phenolic | UL, CSA | |

Straight Blade Type

2 Pole 3 Wire Grounding
NEMA 5-15, 15A 125V
NEMA 6-15, 15A 250V

NEMA 5-15

NEMA 6-15

Plug



J-710



J-720

Connector



J-712



J-722

Flanged Inlet



J-501



J-505

Flanged Outlet



J-502



J-506

Straight Blade Type

2 Pole 3 Wire Grounding
 NEMA 5-20, 20A 125V
 NEMA 6-20, 20A 250V

NEMA 5-20

NEMA 6-20

Plug



Connector



Flanged Inlet



Flanged Outlet



Locking Devices

2 Pole 3 Wire Grounding
 NEMA L5-15, 15A 125V
 NEMA L5-20, 20A 125V
 NEMA L5-30, 30A 125V

NEMA L5-15

NEMA L5-20

NEMA L5-30

Plug



Connector



Flanged Inlet



Flanged Outlet



Receptacle



Locking Devices

2 Pole 3 Wire Grounding
 NEMA L6-15, 15A 250V
 NEMA L6-20, 20A 250V
 NEMA L6-30, 30A 250V

NEMA L6-15

NEMA L6-20

NEMA L6-30

Plug



Material:
Nylon



J-705



Material:
PC+Nylon



WJ-8321



Material:
PC+Nylon



WJ-8331

Connector



Material:
Nylon



J-707



Material:
PC+Nylon



WJ-9321B



Material:
PC+Nylon



WJ-9331B

Flanged Inlet



Material:
Nylon



J-511



Material:
PC+Nylon



J-515



Material:
PC+Nylon



J-519

Flanged Outlet



Material:
Nylon



J-512



Material:
PC+Nylon



J-516



Material:
PC+Nylon



J-520

Receptacle



Material:
Nylon



J-706



Material:
P.B.T



WJ-6322B



Material:
P.B.T



WJ-6331B

Locking Devices

3 Pole 4 Wire Grounding
 NEMA L14-20, 20A 125/250V
 NEMA L14-30, 30A 125/250V
 NEMA L15-20, 20A 250V

NEMA L14-20

NEMA L14-30

NEMA L15-20

Plug



Material:
PC+Nylon



WJ-8420



Material:
PC+Nylon



WJ-8430



Material:
PC+Nylon



WJ-8421

Connector



Material:
PC+Nylon



WJ-9420B



Material:
PC+Nylon



WJ-9430B



Material:
PC+Nylon



WJ-9421B

Flanged Inlet



Material:
PC+Nylon



J-521



Material:
PC+Nylon



J-525



Material:
PC+Nylon



J-523

Flanged Outlet



Material:
PC+Nylon



J-522



Material:
PC+Nylon



J-526



Material:
PC+Nylon



J-524

Receptacle



Material:
P.B.T



WJ-6420B



Material:
P.B.T



WJ-6430B



Material:
P.B.T



WJ-6421B

Locking Devices

3 Pole 4 Wire Grounding
 NEMA L15-30, 30A 250V
 NEMA L16-20, 20A 480V
 NEMA L16-30, 30A 480V

NEMA L15-30 NEMA L16-20 NEMA L16-30

Plug



Connector



Flanged Inlet



Flanged Outlet



Receptacle



Locking Devices

3 Pole 4 Wire Grounding
 NEMA L17-30, 30A 600V
 4 Pole 5 Wire Grounding
 NEMA L21-20, 20A 120/208V
 NEMA L21-30, 30A 120/208V

NEMA L17-30 NEMA L21-20 NEMA L21-30

Plug



Connector



Flanged Inlet



Flanged Outlet



Locking Devices

4 Pole 5 Wire Grounding
NEMA L22-20, 20A 277/480V
NEMA L22-30, 30A 277/480V

NEMA L22-20

NEMA L22-30

Plug

Material: Nylon



WJ-8522

Material: Nylon



WJ-8532

Connector

Material: Nylon



WJ-9522

Material: Nylon



WJ-9532

Flanged Inlet

Material: Nylon



J-539

Material: Nylon



J-541

Flanged Outlet

Material: Nylon



J-540

Material: Nylon



J-542

Locking Devices

4 Pole 5 Wire Grounding
NEMA L23-20, 20A 347/600V
NEMA L23-30, 30A 347/600V

NEMA L23-20

NEMA L23-30

Plug

Material: Nylon



WJ-8523

Material: Nylon



WJ-8533

Connector

Material: Nylon



WJ-9523

Material: Nylon



WJ-9533

Flanged Inlet

Material: Nylon



J-543

Material: Nylon



J-545

Flanged Outlet

Material: Nylon



J-544

Material: Nylon



J-546

Japan Limited Locking Receptacle



WJ-6321B

NEMA L5-20, 2 Pole, 3 Wire,
20A 125V Grounding; Material: Phenolic



WJ-6320B

NEMA L6-20, 2 Pole, 3 Wire,
20A 250V Grounding; Material: Phenolic



WJ-6330B

NEMA L5-30, 2 Pole, 3 Wire,
30A 125V Grounding;
Material: Cover- Phenolic, Base- P.B.T



WJ-6331B

NEMA L6-30, 2 Pole, 3 Wire,
30A 250V Grounding;
Material: Cover- Phenolic, Base- P.B.T



WJ-6332B

NEMA L5-30, 2 Pole, 3 Wire,
30A 125V Grounding; Material: Phenolic



WJ-6432B

NEMA L14-30, 3 Pole, 4 Wire,
30A 125/250V Grounding; Material: Phenolic



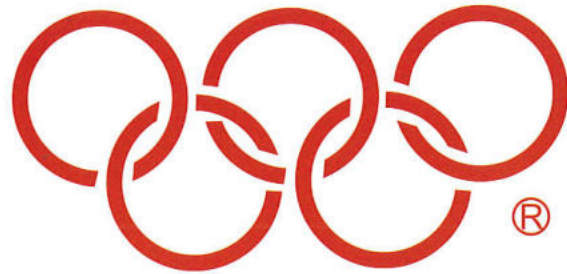
WJ-6422B

NEMA L14-20, 3 Pole, 4 Wire,
20A 125/250V Grounding; Material: Phenolic



WJ-6433B

NEMA L14-30, 3 Pole, 4 Wire,
30A 125/250V Grounding; Material: Phenolic



五洲牌
OLYMPIA

嶸光電器有限公司

Rong Kuang Electric Co., Ltd.

台南市安南區政安路57巷9號

No. 9, Ln. 57, Zheng an Rd., Annan Dist.,

Tainan City 70969, Taiwan

Tel: 886-6-3552631

Fax: 886-6-3552568

E-mail: rokuec@gmail.com

rokuec@rongkuang.com.tw

<http://www.rongkuang.com.tw>