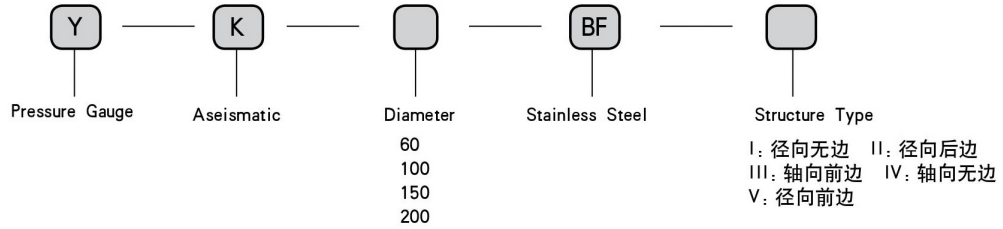
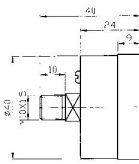


Pressure Gauge

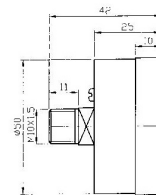
● Ordering Code



Y40 Pressure Gauge



Y50 Pressure Gauge

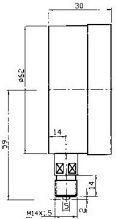


● 特性

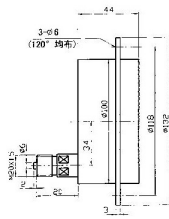
反应灵敏，多种安装方式，多种压力范围，使用方便。制作精度高，



YBF60 Steel Barrel Pressure Gauge



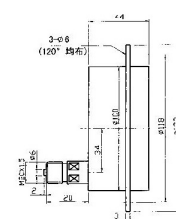
YBF100 Steel Barrel Pressure Gauge



YK60 Aseismic Pressure Gauge



YK100 Aseismic Pressure Gauge



● 特性

防震性能优越。反应灵敏，多种安装方式，多种压力范围。

■ Technical Parameter

Type	Y40	Y50	Y60	YK60	Y100	YK100
Diameter	φ 40	φ 50	φ 60		φ 100	
Pipe Thread	M10x1		M14x1.5		M20x1.5	
Precision	2.5				1.5	
Measure MPa	0 ~ 0.1, 0 ~ 0.16, 0 ~ 0.25, 0 ~ 0, 4.0 ~ 1, 0 ~ 1.6, 0 ~ 2.5, 0 ~ 4, 0 ~ 6, 0 ~ 10, 0 ~ 16, 0 ~ 25, 0 ~ 60					
Aseismic Grade	V.H.4					
Environment Temperature	-40 ~ 70°C					

Note: The thread type could be made to order